

# CR-200Ri

**PREMIUM**  
Roughter



<http://www.kato-works.co.jp>

- Before you use the crane, study the instruction manual thoroughly and follow the instructions it contains.
- Some differences may arise between the machine delivered and the photographs in the catalog due to the country the crane will be used in or any added improvements.  
Note : The specification may be changed without notice.
- The actual colors of the body and interior may appear slightly different from those shown in this catalogue due to the limitations of photography and printing.

● Contact for enquiry:

**KATO** KATO WORKS CO.,LTD.  
QUALITY & EXPERIENCE  
SINCE 1895

ISO 9001  
BUREAU VERITAS  
Certification

Obtained authentication of International  
Specification ISO9001 for quality assurance.

# CR-200Ri

9-37, Higashi-ohi 1-chome, Shinagawa-ku, Tokyo, 140-0011, Japan / Tel.: Head Office: Tokyo (03) 3458-1111 Overseas Marketing Department: Tokyo (03) 3458-1115 / FAX: Tokyo (03) 3458-1163

**CITYRANGE**

# CR-200Ri

**PREMIUM**  
Roughter



**KATO**



**CITYRANGE**

**CR-200Ri**  
**PREMIUM**  
Rougher

# Compact & Powerful

- GVW : less than 20t
- Maximum lifting capacity : 20t × 2.5m
- 6 sections SUPERBOOM
- 2 sections Power JIB
- ECO switch (Drive & Crane)
- Easy operation via Colorful touch panel
- New Cummins Diesel Engine (Tier 4 interim / Stage IIIB)
- New Functions of ACS for safety Improvement



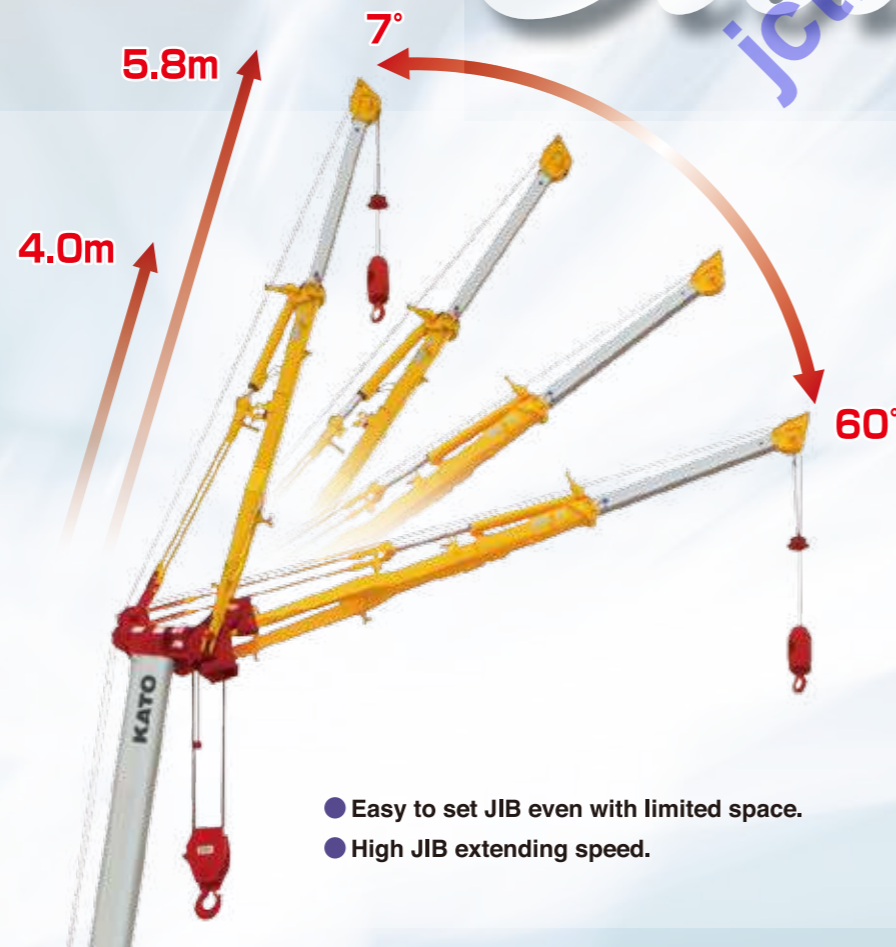


# Steady performance with the latest eco technology

## Easy and safe JIB setting

JIB setting requires only 3 steps

- Tail slewing radius ..... **2.25m**
- **2.39m** on slide sheave



- Easy to set JIB even with limited space.
- High JIB extending speed.



### New adoption! Saving energy for driving and crane operation

- Perfect engine control makes reduction of the fuel consumption by using eco switch while driving and crane operation. Contribution to CO<sub>2</sub> reduction and saving energy.
- Compare to normal driving,

**Energy saves about 10%.**



# Eco Technology Intelligence

## High rigidity 6-sections SUPERBOOM with minimal flexure in vertical and horizontal axis

### ◆ Boom lifting capacity SUPERBOOM

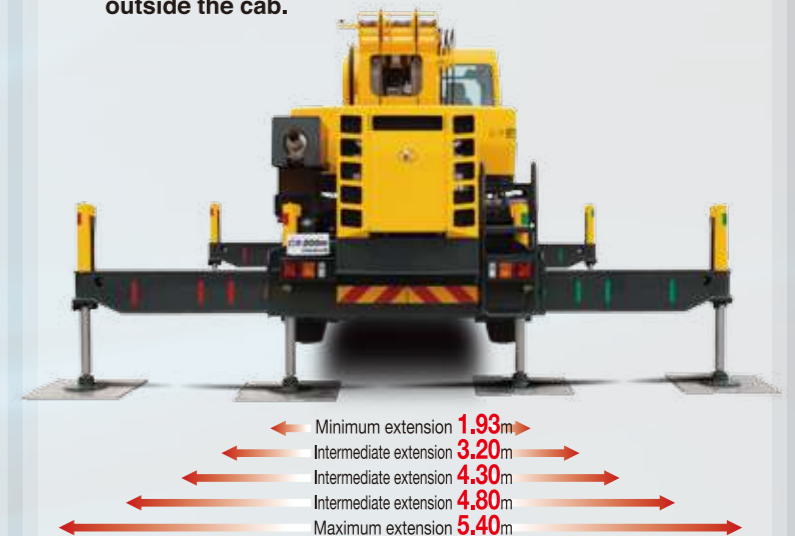
- Maximum lifting capacity..... **20t×2.5m**
- Boom length..... **6.5m~28m**
- Boom derricking angle..... **-9.5°~83°**
- Maximum lifting height..... **29.1m (Boom)**

### ◆ Power jib lifting capacity

- Maximum lifting capacity..... **2.5t×75°**
- Jib length..... **4.0m, 5.8m**
- Jib offset angle..... **7°~60°**
- Maximum lifting height..... **34.8m (Jib)**

## Increased operability with extensive intermediate extension!

- Outrigger can be operated from inside and outside the cab.





# Intelligent Cabin

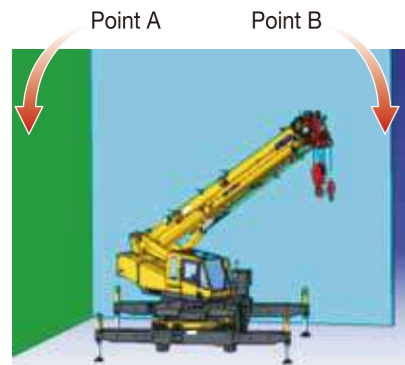
## Provide wider view thanks to slanted boom

### New ACS with colorful display



#### 1. Working area limitation setting display

The working area limitation setting restricts movement into the area beyond a line specified by points A and B, which in terms of the slewing angle and working radius.



#### 2. Limiting function of load factor

Load factor from 80% to 100% flexible setting (moment restriction)



COR information display



### Good left side visibility reduces collision risk

Left front view safety camera



\*photo is a composite photo with separate image inserted.

# Progressive Parts



Electrically retractable side view mirrors [with defroster (option)]



Discharge head lamp



Rear view safety camera (option)

Side marker lamp (option)



Left front view safety camera



Way side lamp (option)

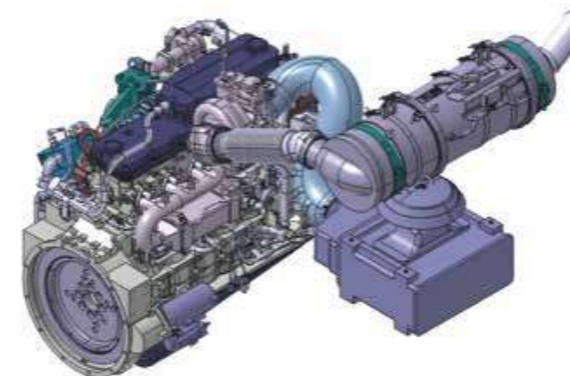
Storage box (option)



Winch view camera (option)

# Engine

Tier 4 interim / Stage III B



Engine : CUMMINS QSB6.7-4A  
(Electronically controlled Common-rail type)

- Piston displacement..... 6.690L
- Max Power..... 175kW / 2,300min<sup>-1</sup>
- Max Torque..... 888N·m / 1,500min<sup>-1</sup>